

Cardinal Pipeline, L.P.
January 28, 2025

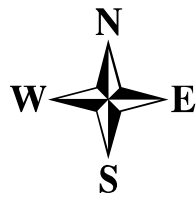
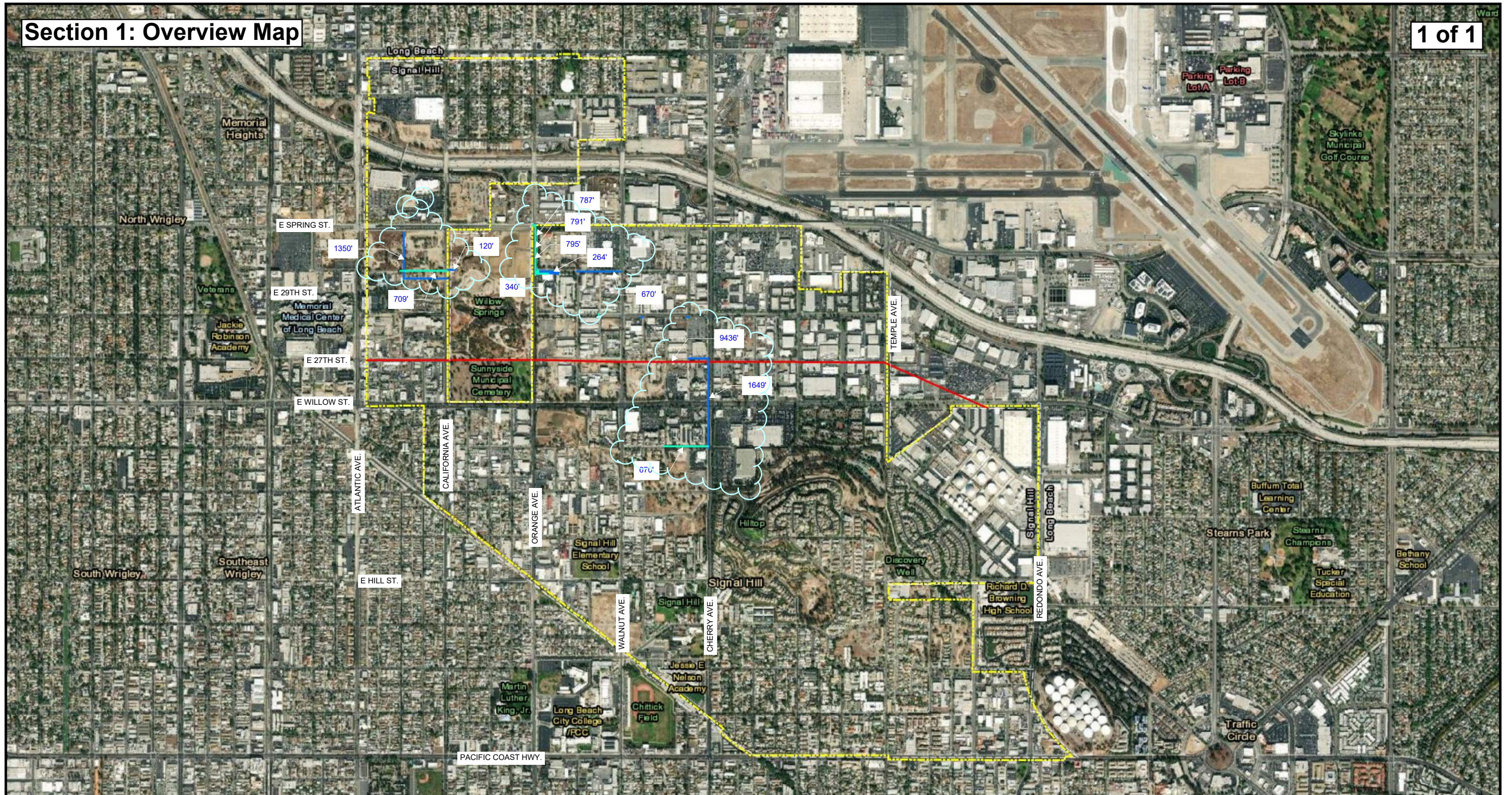
EXHIBIT A

DESCRIPTION OF PIPELINE ROUTES, DIMENSIONS, DEPTHS, AND MAPS

Pipelines, dimensions, and routes are shown and described in the following sections:

- Section 1. Overview Map
- Section 2. Pipeline Descriptions
- Section 3. Pipeline Maps

Section 1: Overview Map



1 inch = 1,400 feet

Cardinal/Crimson Pipeline Exhibit

Legend

- 10" Brea Crude Line (Approx. 3276')
- 6" Signal Hill Crude Line (inactive) (Approx. 4834')
- 6" Signal Hill Dry Gas Line (Approx. 4122.8')
- City Boundary

Prepared For: The City of Signal Hill
Project Number: 21-SIG-02

Notes: The pipeline alignments shown hereon are based on legal descriptions provided by the City of Signal Hill. Due to ambiguity in the descriptions, the accuracy of the pipelines shown cannot be estimated.
Names and approximate lengths listed in Legend from provided legal descriptions.

Prepared by:



22541 Aspan Street, Suite C, Lake Forest, California 92630
Telephone: 949-768-0731 Facsimile: 949-768-3731

Date: 05/17/21

KDMMeridian.com

CITY OF SIGNAL HILL
FRANCHISE ORDINANCE No. 92-10-1135

PIPELINE INVENTORY
ACQUIRED BY CARDINAL PIPELINE, L.P.

Pipeline: Brea Crude Line
Diameter: 10"
Length: 3276'

Legal Description:

Commencing at the southerly right-of-way line of Willow Street at a point lying approximately 1400 feet easterly of Temple Avenue; then proceeding in a generally northwesterly direction within private property for a distance of approximately 1707 feet to the westerly half of Temple Avenue at a point lying approximately 650 feet northerly of the intersection of Temple Avenue and Willow Street; then continuing westerly within private property crossing Signal Parkway for a distance of approximately 1307 feet to the easterly right-of-way line of Junipero Avenue; then continuing westerly entering into the southerly half of E. 27th Street, crossing N. Raymond Avenue, Dawson Avenue, N. St. Louis Avenue, Cherry Avenue, N. Rose Avenue and N. Gaviota Avenue for a distance of approximately 2350 feet; then continuing westerly into private property for a distance of 270 feet to the westerly right-of-way line of N. Walnut Avenue; then continuing easterly within the southerly half of E. 27th Street crossing to the westerly right-of-way line of Gundry Avenue for a distance of approximately 660 feet; then continuing easterly within private property for a distance of approximately 608 feet to the westerly right-of-way line of Orange Avenue being an internal boundary of the City of Signal Hill and the City of Long Beach; then continuing westerly within private property within the City of Long Beach for a distance of approximately 1325 feet and re-entering the southerly half of E. 27th Street in the City of Signal Hill at its intersection of California Avenue; then continuing westerly within E. 27th Street crossing N. Myrtle Avenue, N. Olive Avenue and N. Lime Avenue for a distance of approximately 1218 feet to the westerly boundary of the City of Signal Hill lying approximately 130 feet easterly of the intersection of E. 27th Street and Atlantic Avenue.

CITY OF SIGNAL HILL
FRANCHISE ORDINANCE No. 93-03-1150

PIPELINE INVENTORY
ACQUIRED BY CARDINAL PIPELINE, L.P.

Pipeline: Signal Hill Crude Line (Inactive)
Diameter: 6"
Length: 4834'

Legal Description:

1464.0' of 6" Line

Beginning approximately 50.0 feet South and approximately 30.0 feet West of centerline intersection of Spring Street and Olive Avenue, being the West right-of-way line of Olive Avenue; thence East approximately 15.0' to a 6' x 8' swage; thence South approximately 635 feet; thence East approximately 706 feet to the corporate boundary of the City of Signal Hill; containing approximately 1341 feet of 6 inch pipe.

Beginning approximately 15.0 feet North of the centerline of 29th Street and the East right-of-way of California Avenue, being the corporate boundary of the City of Signal Hill, commencing the portion of a 6 inch line; thence East approximately 123.0 feet to the corporate boundary of the City of Signal Hill; containing approximately 123.0 feet of 6 inch line.

664.0' of 6" Line

Beginning approximately 30.0 feet East and approximately 10.0 feet North of the centerline intersection of Orange Avenue and 29th Street; thence Northwesterly approximately 60.0 feet to a point on the centerline of Orange Avenue, distant approximately 60.0 feet North of the prolonged centerline of 29th Street, containing approximately 60.0 feet of 6 inch pipe.

Beginning approximately 30.0 feet East and approximately 10.0 feet North of the centerline intersection of Orange Avenue and 29th Street, being the East right-of-way line of Orange Avenue; thence Southeasterly approximately 35.0 feet to an angle point approximately 50.0 feet East and approximately 20.0 feet South of said centerline intersection; thence East approximately 295.0 feet; thence South approximately 10.0 feet to the South right-of-way line of 29th Street, containing approximately 340.0 feet of 6 inch pipe.

Beginning approximately 355.0 feet East and approximately 30.0 feet South of the centerline intersection of Orange Avenue and 29th Street; thence North approximately 20.0 feet; thence West approximately 244.0 feet, containing approximately 264 feet of 6 pipe pipe.

80.0' of 6" Line

Beginning approximately 270.0 feet East and approximately 25.0 feet South of the centerline intersection of Walnut Avenue and 28th Street, being a 6" x 2" swage; thence East approximately 1.0 foot; thence South approximately 3.0 feet; thence East approximately 27.0 feet; thence North approximately 3.0 feet; thence East approximately 1.0 foot to a 6" x 2" swage, containing approximately 35.0 feet of 6 inch pipe.

Beginning approximately 35.0 feet West and approximately 25.0 feet South of the centerline intersection of Gardenia Avenue and 28th Street; thence East approximately 40.0 feet; thence South approximately 5.0 feet, containing approximately 45.0 feet of 6 inch pipe.

1620' of 6" Line

Beginning approximately 26.0 feet West of the centerline intersection of 25th Street and Cherry Avenue; thence North approximately 1105.0 feet to an angle point to the Northwest; thence approximately 50.0 feet to a point approximately 33.0 feet West of the centerline of Cherry Avenue; thence North approximately 165.0 feet to a point approximately 18.0 feet North and approximately 33.0 feet West of centerline intersection of 27th Street and Cherry Avenue; thence West approximately 300.0 feet, containing approximately 1620 feet of 6 inch pipe.

1006.0' of 6" Line

Beginning approximately 10.0 feet North and approximately 20.0 feet West of the centerline of 29th Street and Walnut Avenue; thence West approximately 670.0 feet to the West right-of-way line of Gundry Avenue, containing approximately 670.0 feet of 6 inch pipe.

Beginning approximately 30.0 feet North and approximately 51.0 feet East of the centerline intersection of Orange Avenue and 29th Street; thence South approximately 20.0 feet; thence East approximately 316.0 feet, containing approximately 336.0 feet of 6 inch pipe.

CITY OF SIGNAL HILL
FRANCHISE ORDINANCE No. 92-11-1137

PIPELINE INVENTORY
ACQUIRED BY CARDINAL PIPELINE, L.P.

Pipeline: Signal Hill Dry Gas Line
Diameter: 6"
Length: 4122.8'

Legal Description:

710.0' of 6" Line

Beginning approximately 10.0 feet North of the centerline of 29th Street and the East right-of-way line of California Ave., commencing the portion of a 6" line; thence West approximately 710 feet to the angle point on the 6" franchise line; containing approximately 710 feet of 6 inch pipe.

45.0' of 6" Line

Beginning approximately 310.0 feet West of the centerline of Gundry Ave. and approximately 15.0 feet South of the North right-of-way line of 28th Street, being a 6"x4" swage; thence South approximately 45 feet to the South right-of-way line of 28th Street; containing approximately 45 feet of 6 inch pipe.

2698.0' of 6" Line

Beginning approximately 16.0 feet East and 48 feet South of the centerline intersection of Orange Ave. and 29th Street; thence North approximately 741.0 feet; thence West approximately 46.0 feet; containing approximately 787.0 feet of 6 inch pipe.

Beginning approximately 17.0 feet East and 48.0 feet South of the centerline intersection of Orange Ave. and 29th Street; thence North approximately 743.0 feet; thence West approximately 47.0 feet; containing approximately 790 feet of 6 inch pipe.

Beginning approximately 19.0 feet East and 48 feet South of the centerline of Orange Ave. and 29th Street; thence North approximately 744.0 feet; thence West approximately 49.0 feet; containing approximately 793.0 feet of 6 inch pipe.

Beginning approximately 45.0 feet East and 30.0 feet South of the centerline intersection of Orange Ave. and 29th Street; thence northwesterly approximately 38.0 feet to a point on the prolonged East right-of-way line of Orange Ave. distant approximately 5.0 feet North of the centerline of 29th Street; containing approximately 38.0 feet of 6 inch pipe.

Section 2: Pipeline Descriptions

5 of 5

Beginning approximately 50.0 feet East and 30.0 feet South of the centerline intersection of Orange Ave. and 29th Street; thence North approximately 60.0 feet; containing approximately 60 feet of 6 inch pipe.

Beginning approximately 57.0 feet East and 30.0 feet South of the centerline intersection of Orange Ave. and 29th Street; thence North approximately 60.0 feet; containing approximately 60.0 feet of 6 inch pipe.

Beginning approximately 53.0 feet East and 30.0 feet South of the centerline intersection of Orange Ave. and 29th Street; thence North approximately 4.0 feet; thence East approximately 93.0 feet to a 6 inch flange; thence continue from approximately 1.0 foot East of said flange approximately 68.0 feet; thence South approximately 5.0 feet; containing approximately 170.0 feet of 6 inch pipe.

669.8' of 6" Line

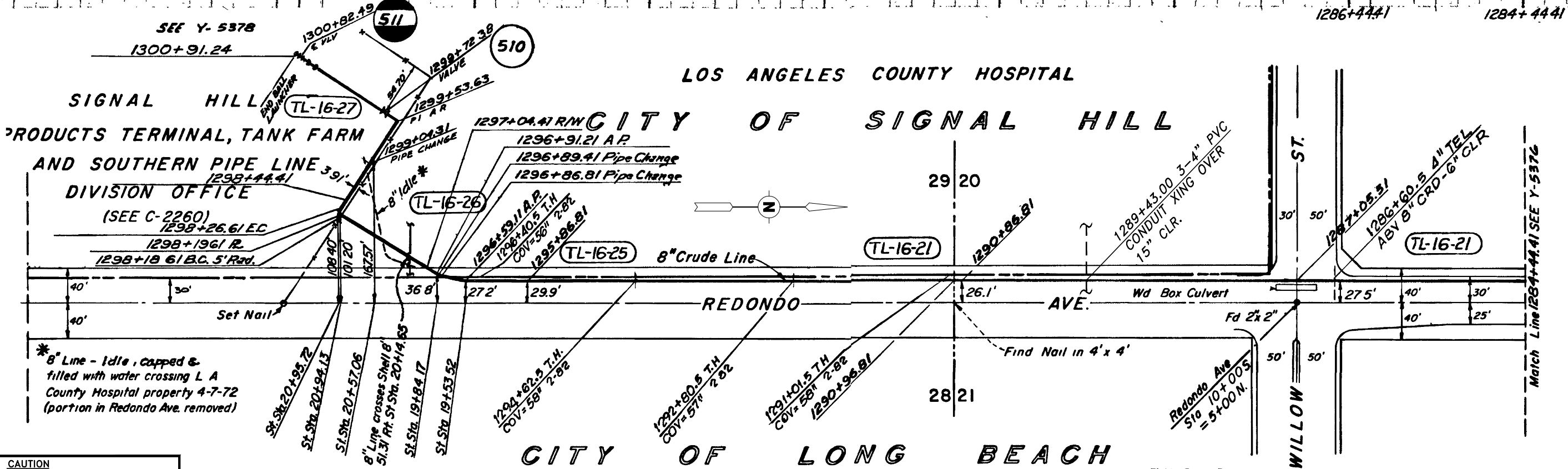
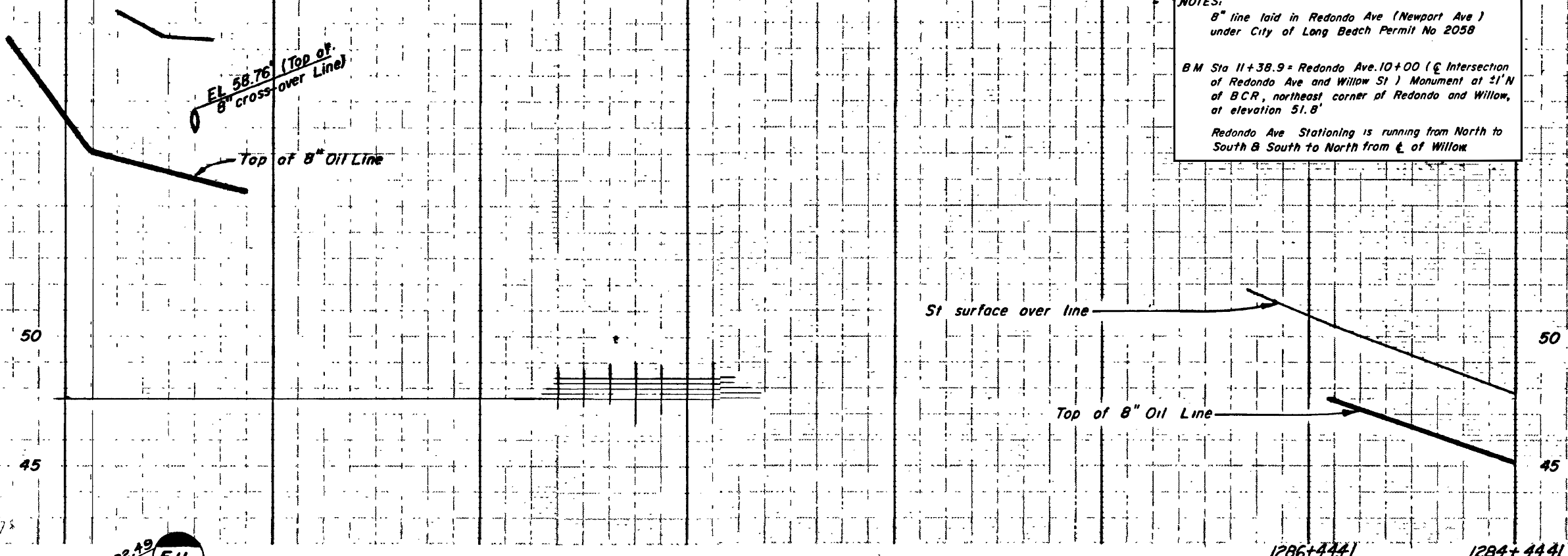
Beginning approximately 30.0 feet West and 26.0 feet North of the centerline intersection of Cherry Ave. and 25th; thence West approximately 669.8 feet to a blind flange; containing approximately 669.8 feet of 6 inch pipe.

EL 64.22' (Top of Mac Surf Term Yd.)

Section 3: Pipeline Maps

1 of 11

NOTES:
 8" line laid in Redondo Ave (Newport Ave) under City of Long Beach Permit No 2058
 BM Sta 11+38.9 = Redondo Ave. 10+00 (Intersection of Redondo Ave and Willow St) Monument at 2' N of B.C.R., northeast corner of Redondo and Willow, at elevation 51.8'
 Redondo Ave Stationing is running from North to South & South to North from C of Willow



* 8" Line - Idle, capped & filled with water crossing L A County Hospital property 4-7-72 (portion in Redondo Ave. removed)

CAUTION
 LOCATION OF PIPE LINES AS SHOWN MAY NOT BE EXACT. THE SPECIFIC LOCATIONS AND DEPTHS OF SUCH LINES MUST BE DETERMINED BY HAND EXCAVATION. BEFORE ANY EXCAVATION OR OTHER WORK NEAR THE LINES SHOWN ON THIS MAP, CONTACT EQUILON PIPELINE COMPANY LLC., AT (888) 257-0877 24HRS. 7 DAYS A WEEK

Field Bk Page
 PL 72 1-4
 PL 83 1

60' 0' 60' 120' 180'
 SCALE IN FEET

DWG. NUMBER	REFERENCE DRAWING DESCRIPTION	REV. NO.	DATE	REVISION DESCRIPTION	BY	CHK.	ENGR.	APP.
		1	10-12-99	ADDED CONDUIT CROSSING (SP-30)				

STATION TO STATION	SIZE (I.D.)	GRADE	COATING	DATE	W.O.
1299+04.33	8.249	X-52	X-TRUE COAT	3-73	377172
1296+89.41	8.249	X-52	X-TRUE COAT	4-72	377927
1296+86.81	8.07	B	SOMASTIC	8-52	528518
1284+44.41					

EQUILON
 PIPELINE COMPANY LLC
 CALIFORNIA DISTRICT

FORMER DRAWING NUMBER: Y-1388
 LOCATION CODE: 71319

BREA CRUDE TRUNK LINE

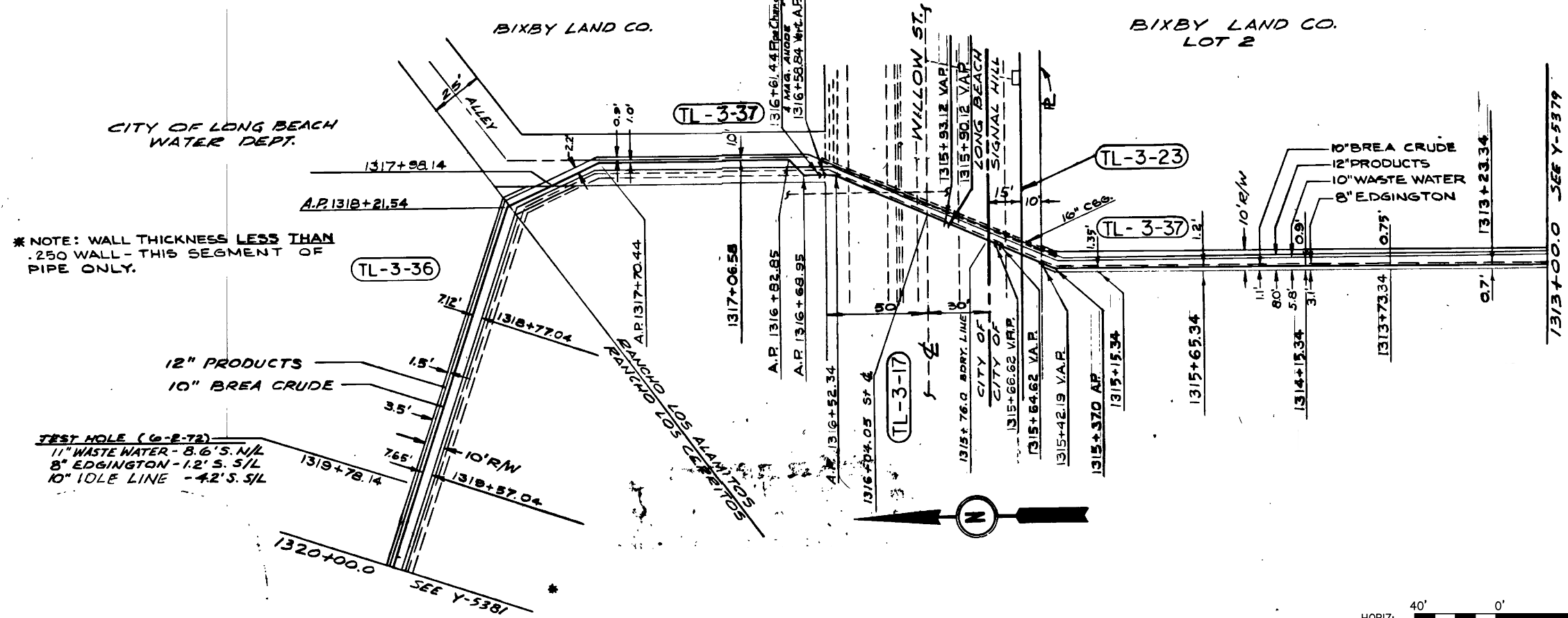
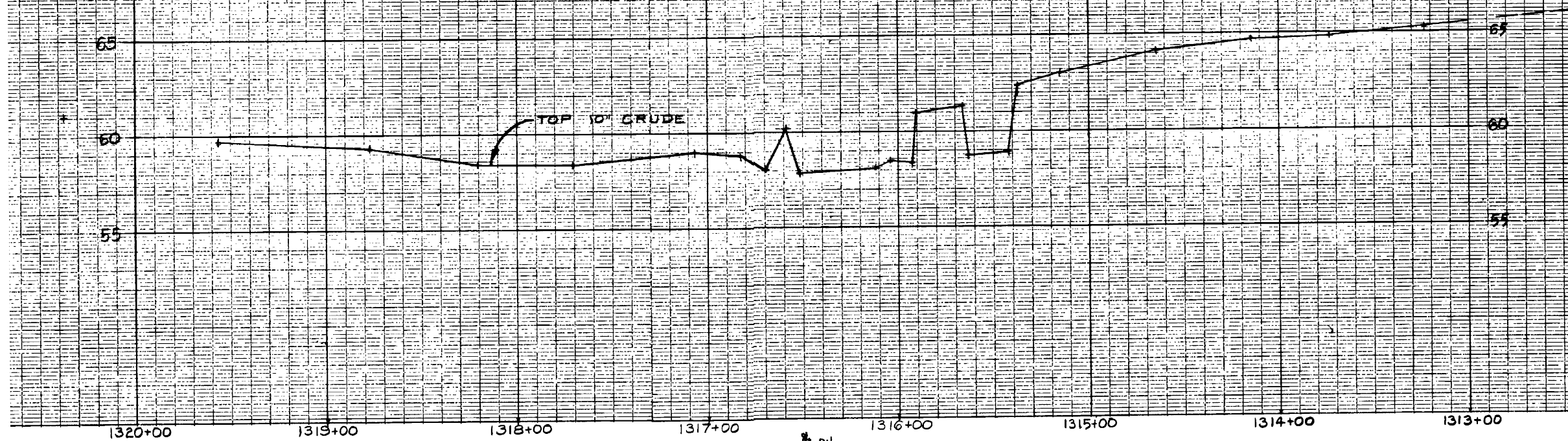
BREA CRUDE TRUNK LINE

LOS ANGELES COUNTY LONG BEACH/SIGNAL HILL

SCALE: SEE GR. SCL. DATE: 4-16-71
 DRAWN: F.M.FAASAU Sheet 1 of 1 Y-5377

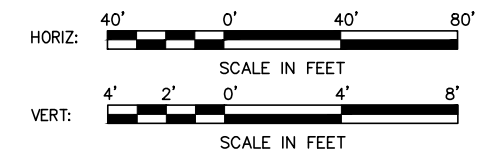
REV. 1

Section 3: Pipeline Maps



* NOTE: WALL THICKNESS LESS THAN .250 WALL - THIS SEGMENT OF PIPE ONLY.

TEST HOLE (G-2-72)
 11" WASTE WATER - 8.6' S. N/L
 8" EDGINGTON - 1.2' S. S/L
 10" IDLE LINE - 4.2' S. S/L



THIS DOCUMENT IS CONFIDENTIAL AND IT SHALL NOT BE REPRODUCED OR REDISTRIBUTED WITHOUT PRIOR PERMISSION. NEITHER THE OPERATOR NOR THE OWNER MAKE ANY WARRANTY AS TO THE CORRECTNESS OR COMPLETENESS OF THE INFORMATION CONTAINED ON THIS DRAWING, AND THE USER ASSUMES ALL RISK OF LOSS TO PERSONS AND PROPERTY AS A RESULT OF RELIANCE THEREON.

REV NO	DATE	DESCRIPTION OF REVISION	BY	CHK	ENGR
1	11/18/15	ADDED TITLE BLOCK AND DISCLAIMER TO FORMER SHELL DWG		RR	
0	06/1978	GENERAL REVISION			

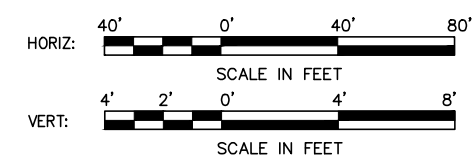
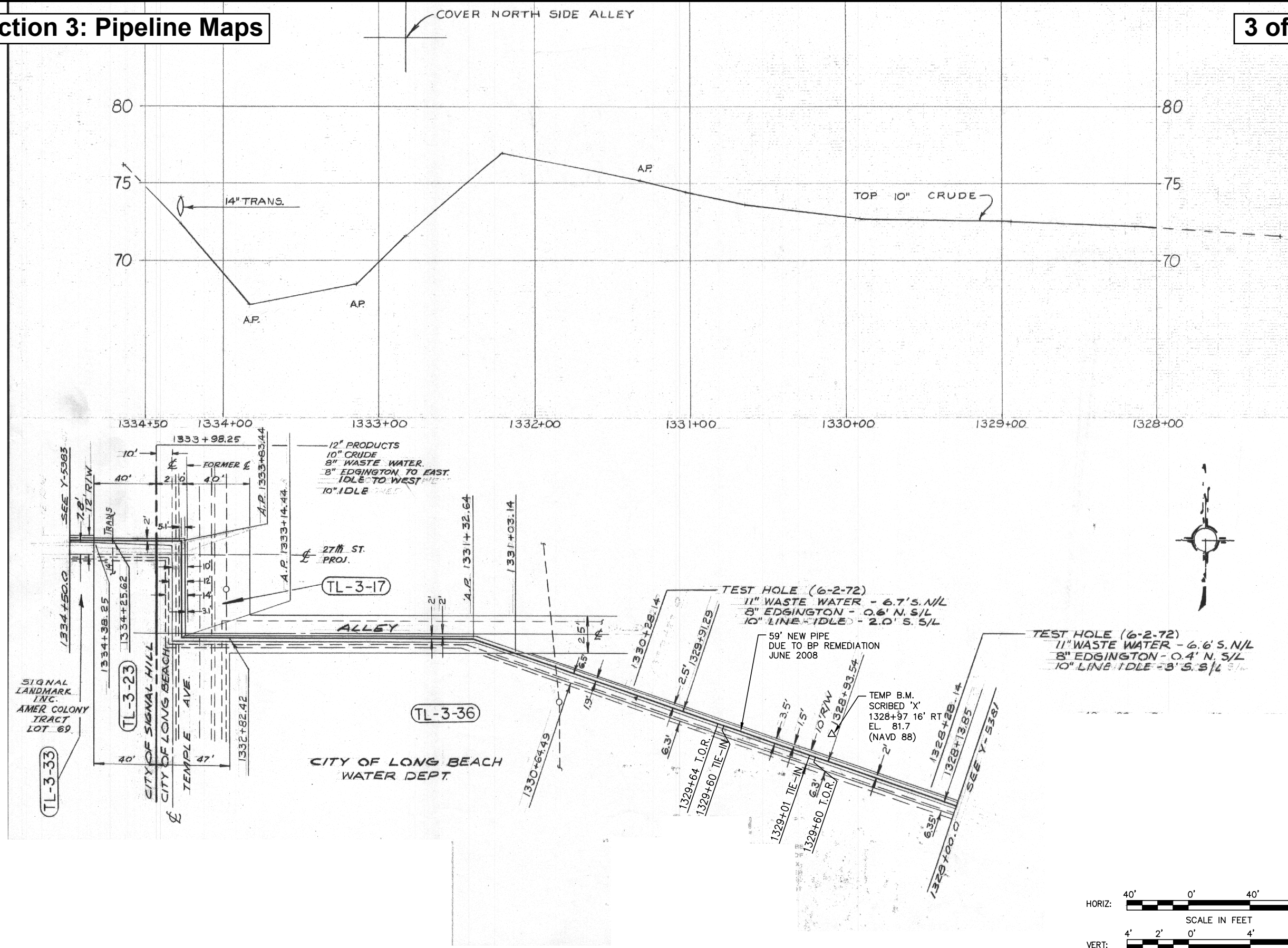
STATION TO STATION	SIZE (I.D.)	GRADE	COATING	DATE	W.O.
1313+00.0	10.312	X-52	NO. 2 SOMASTIC	6/69	
1316+61.44	10.250	X-52	X-TRUE COAT	3/73	377172

CRIMSON PIPELINE L.P.
 3760 Kilroy Airport Way, Suite 300
 Long Beach, California 90806

EAST CRUDE 10" CSFM 339
 PIPELINE ALIGNMENT
 SIGNAL HILL/LONG BEACH, CA

SCALE: AS SHOWN DATE: 01/02/73
 DRAWN: SL SHEET 1 OF 1 Y-5380 REV. 1

Section 3: Pipeline Maps



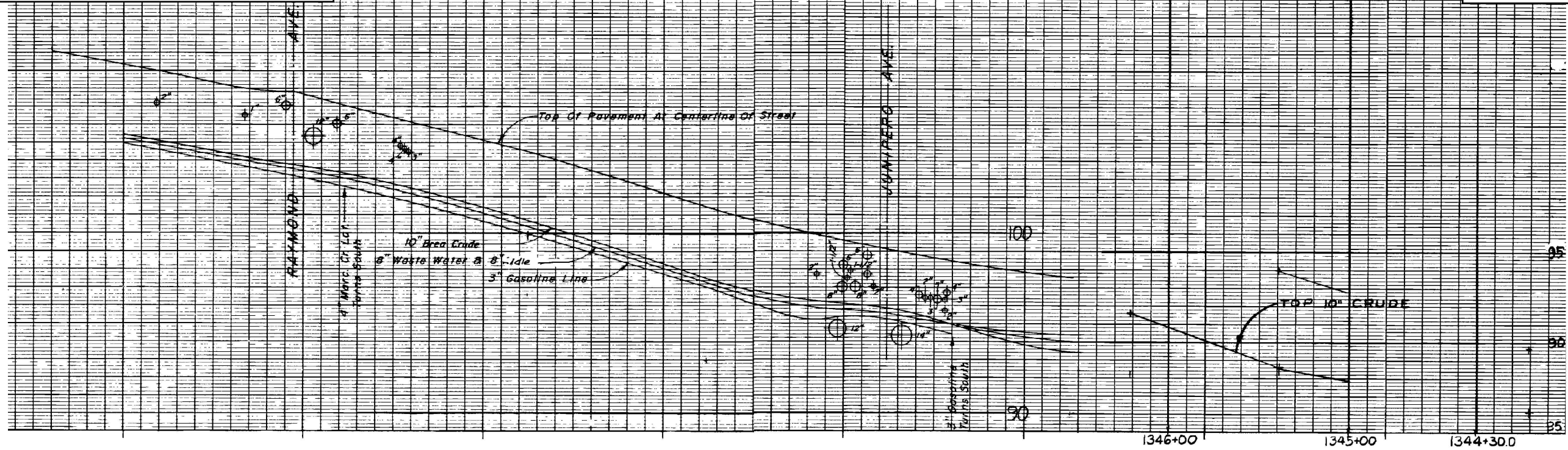
THIS DOCUMENT IS CONFIDENTIAL AND IT SHALL NOT BE REPRODUCED OR REDISTRIBUTED WITHOUT PRIOR PERMISSION. NEITHER THE OPERATOR NOR THE OWNER MAKE ANY WARRANTY AS TO THE CORRECTNESS OR COMPLETENESS OF THE INFORMATION CONTAINED ON THIS DRAWING, AND THE USER ASSUMES ALL RISK OF LOSS TO PERSONS AND PROPERTY AS A RESULT OF RELIANCE THEREON.

REV NO	DATE	DESCRIPTION OF REVISION	BY	CHK	ENGR
2	11/18/15	ADDED TITLE BLOCK AND DISCLAIMER TO FORMER SHELL DWG		RR	
1	06/2008	GENERAL REVISION			
0	06/1978	GENERAL REVISION			

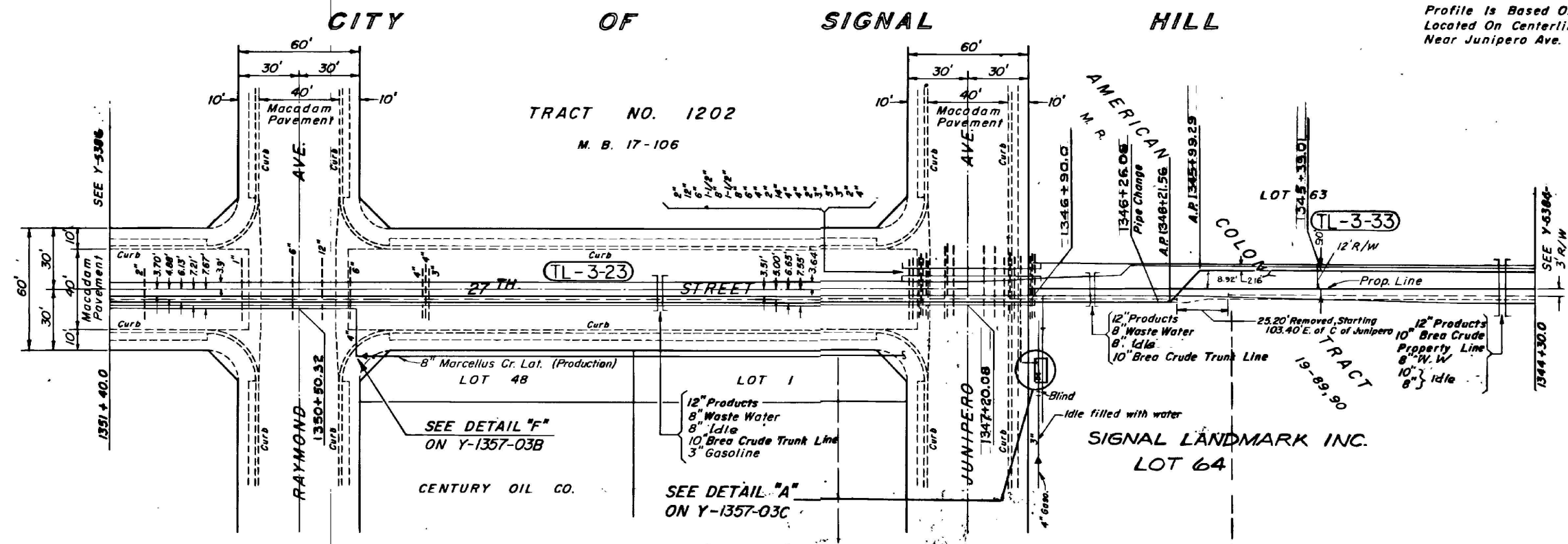
STATION TO STATION	SIZE (I.D.)	GRADE	COATING	DATE	W.O.
1328+00.0 - 1334+50.0	10.250 T.250W.T.	X-52	X-TRUE COAT	3/73	377172
1329+01 - 1329+60	10.750 T.250W.T.	X-52	X-TRUE COAT	6/08	

CARDINAL PIPELINE L.P.
3760 Kilroy Airport Way, Suite 300
Long Beach, California 90806

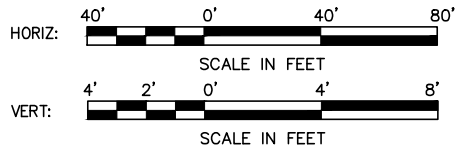
BREA CRUDE 10" CSFM-339		SCALE: AS SHOWN	DATE: 01/02/74	Y-5382	REV. 2
PIPELINE ALIGNMENT LONG BEACH/SIGNAL HILL					
DRAWN: SL	SHEET 1 OF 1				



Profile is Based On B.M. (Elev. 90.876)
 Located On Centerline Of 28 Th. Street
 Near Junipero Ave.



*NOTE: WALL THICKNESS LESS THAN .250 WALL - THIS SEGMENT OF PIPE ONLY.



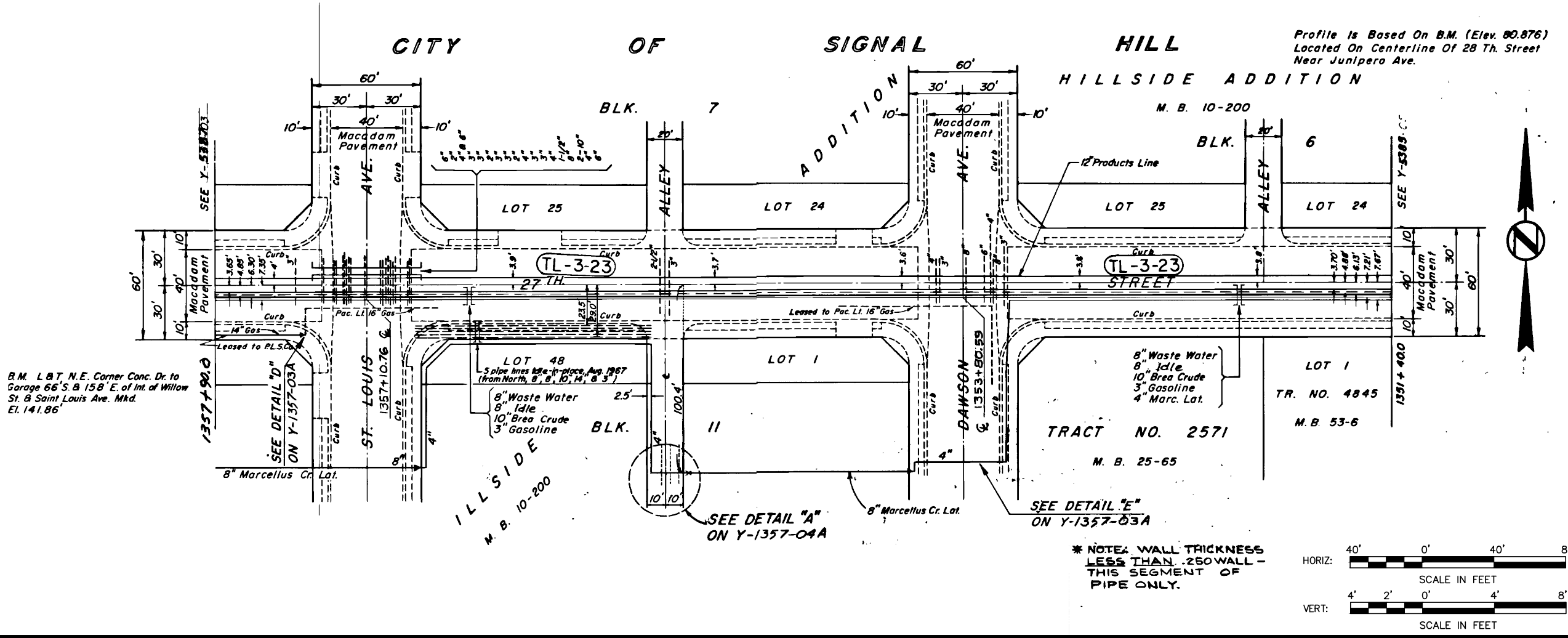
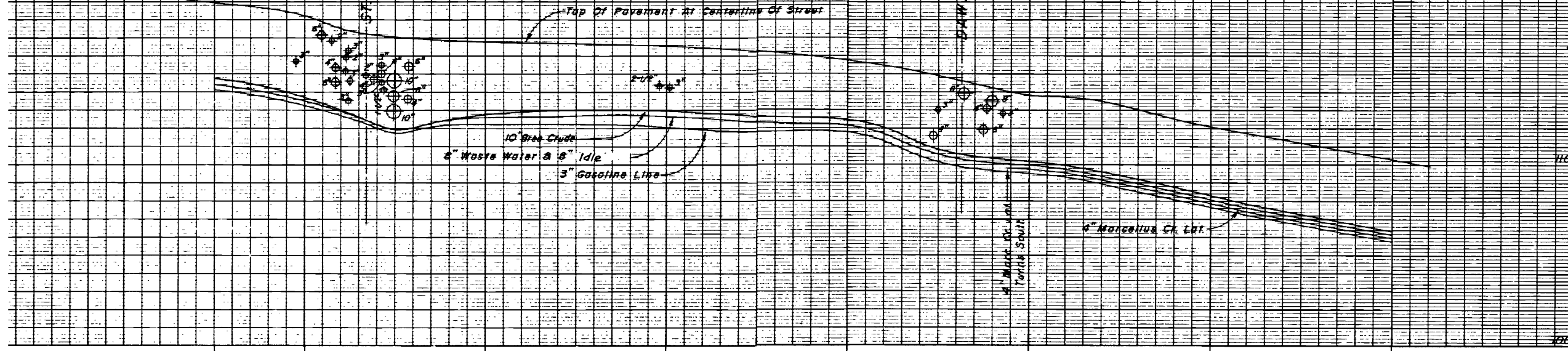
THIS DOCUMENT IS CONFIDENTIAL AND IT SHALL NOT BE REPRODUCED OR REDISTRIBUTED WITHOUT PRIOR PERMISSION. NEITHER THE OPERATOR NOR THE OWNER MAKE ANY WARRANTY AS TO THE CORRECTNESS OR COMPLETENESS OF THE INFORMATION CONTAINED ON THIS DRAWING, AND THE USER ASSUMES ALL RISK OF LOSS TO PERSONS AND PROPERTY AS A RESULT OF RELIANCE THEREON.

REV NO	DATE	DESCRIPTION OF REVISION	BY	CHK	ENGR
1	11/18/15	ADDED TITLE BLOCK AND DISCLAIMER TO FORMER SHELL DWG		RR	
0	06/1978	GENERAL REVISION			

1341+50.0	1344+30.0	10.250 .250W.T.	X-52	X-TRUE COAT	3/73	377172
STATION TO STATION	SIZE (I.D.)	GRADE	COATING	DATE	W.O.	

CARDINAL PIPELINE L.P.
 3760 Kilroy Airport Way, Suite 300
 Long Beach, California 90806

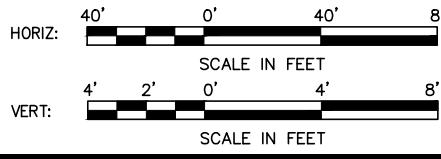
BREA CRUDE 10" CSFM-339 PIPELINE ALIGNMENT SIGNAL HILL, CA		SCALE: AS SHOWN	DATE: 06/12/73	REV. 1
DRAWN: SL	SHEET 1 OF 1	Y-5385		



B.M. L B T N.E. Corner Conc. Dr. to Garage 66'S. B 158' E. of Int. of Willow St. & Saint Louis Ave. Mkd. El. 141.86'

Profile is Based On B.M. (Elev. 80.876) Located On Centerline Of 28 Th. Street Near Junipero Ave.

* NOTE: WALL THICKNESS LESS THAN .250 WALL - THIS SEGMENT OF PIPE ONLY.



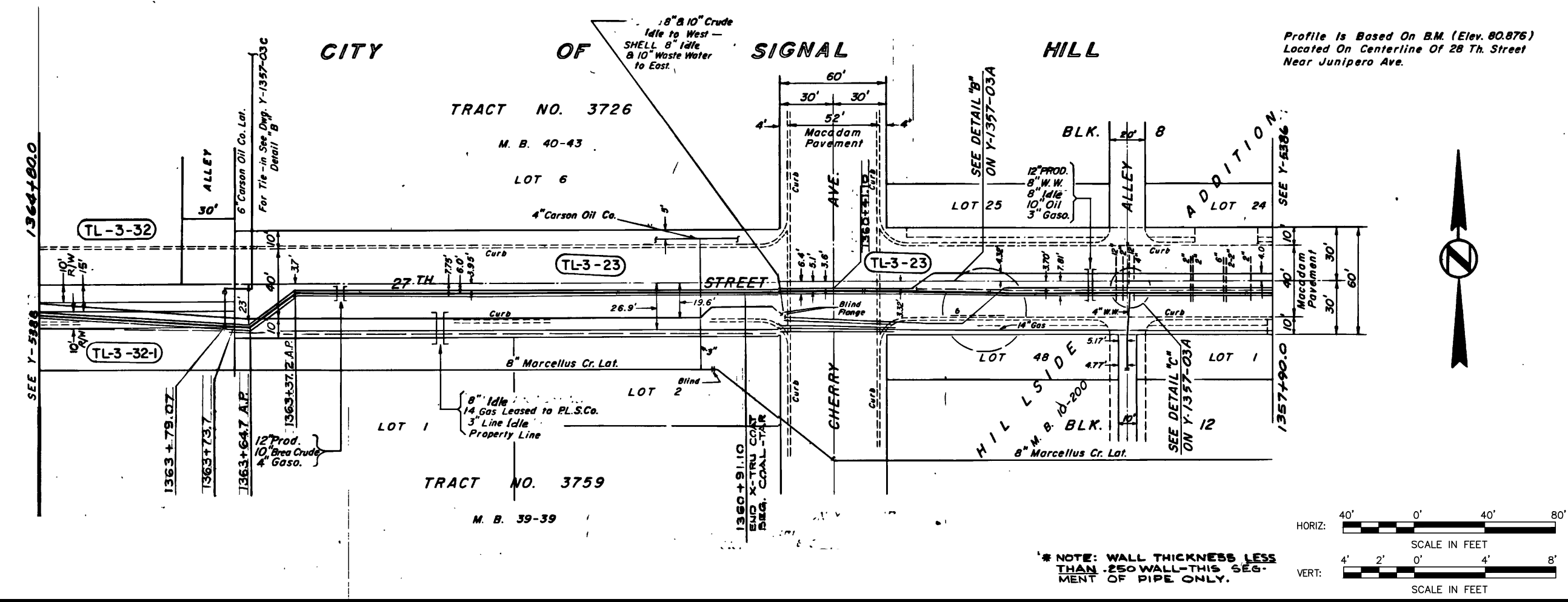
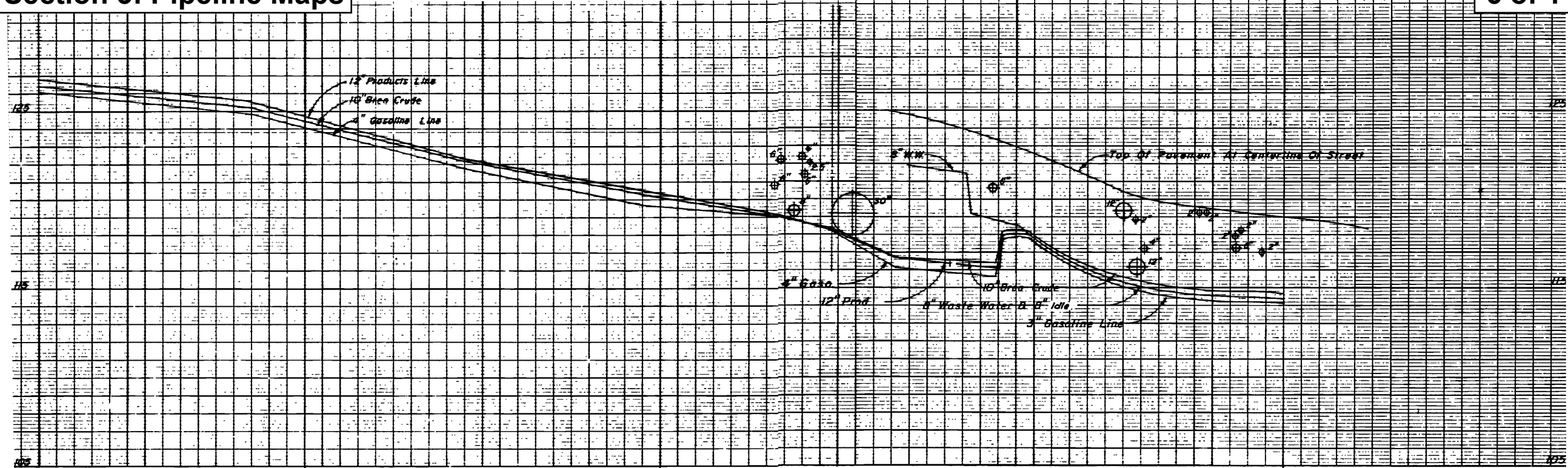
THIS DOCUMENT IS CONFIDENTIAL AND IT SHALL NOT BE REPRODUCED OR REDISTRIBUTED WITHOUT PRIOR PERMISSION. NEITHER THE OPERATOR NOR THE OWNER MAKE ANY WARRANTY AS TO THE CORRECTNESS OR COMPLETENESS OF THE INFORMATION CONTAINED ON THIS DRAWING, AND THE USER ASSUMES ALL RISK OF LOSS TO PERSONS AND PROPERTY AS A RESULT OF RELIANCE THEREON.

REV NO.	DATE	DESCRIPTION OF REVISION	BY	CHK	ENGR
1	11/18/15	ADDED TITLE BLOCK AND DISCLAIMER TO FORMER SHELL DWG	RR		
0	06/1978	GENERAL REVISION			

STATION TO STATION	SIZE (I.D.)	GRADE	COATING	DATE	W.O.
1341+50.0	1344+30.0	10.250 .250W.T.	X-52 X-TRUE COAT	3/73	377172

CARDINAL PIPELINE L.P.
3760 Kilroy Airport Way, Suite 300
Long Beach, California 90806

BREA CRUDE 10" CSFM-339		SCALE: AS SHOWN	DATE: 06/12/73	Y-5386	REV. 1
PIPELINE ALIGNMENT SIGNAL HILL, CA					
DRAWN: SL	SHEET 1 OF 1				



THIS DOCUMENT IS CONFIDENTIAL AND IT SHALL NOT BE REPRODUCED OR REDISTRIBUTED WITHOUT PRIOR PERMISSION. NEITHER THE OPERATOR NOR THE OWNER MAKE ANY WARRANTY AS TO THE CORRECTNESS OR COMPLETENESS OF THE INFORMATION CONTAINED ON THIS DRAWING, AND THE USER ASSUMES ALL RISK OF LOSS TO PERSONS AND PROPERTY AS A RESULT OF RELIANCE THEREON.

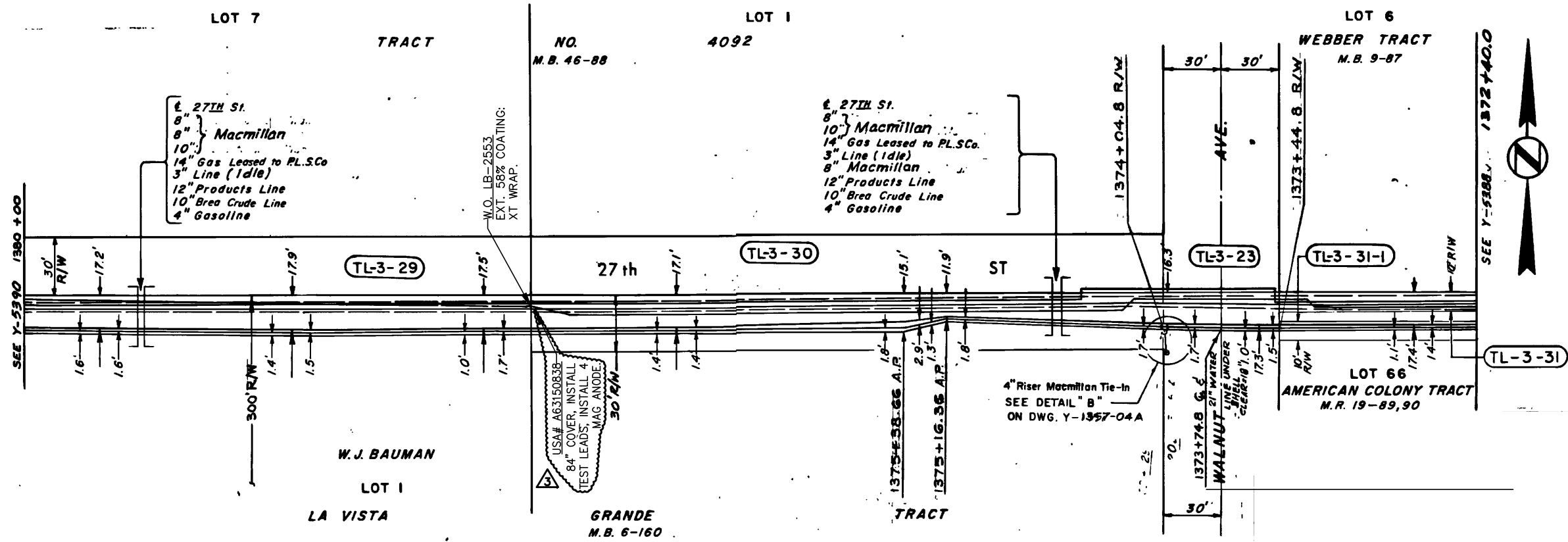
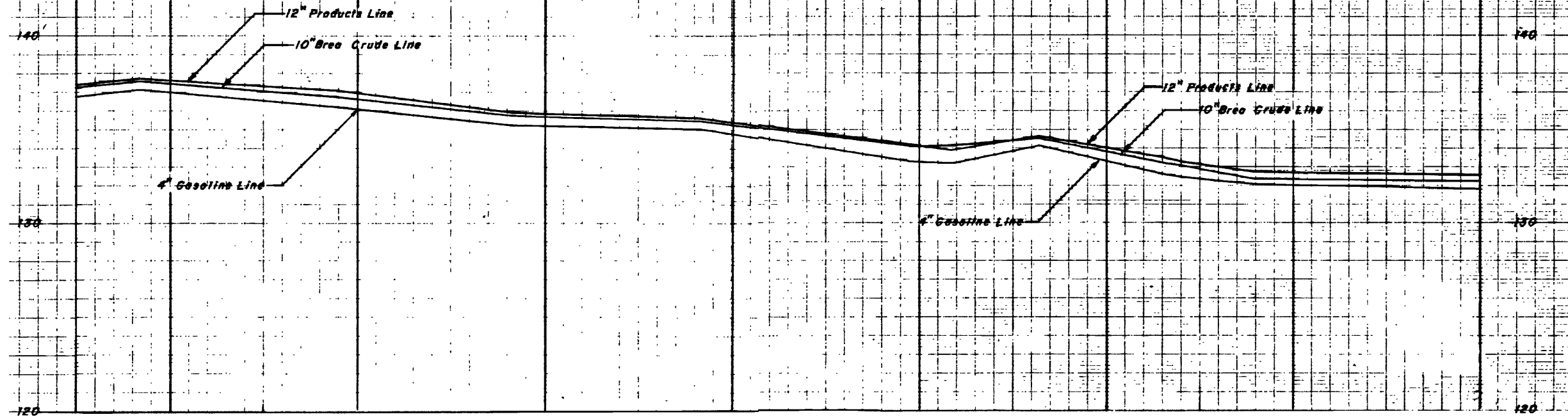
REV NO	DATE	DESCRIPTION OF REVISION	BY	CHK	ENGR
1	11/23/15	ADDED TITLE BLOCK AND DISCLAIMER TO FORMER SHELL DWG	RR		
0	06/1978	GENERAL REVISION			

STATION TO STATION	SIZE (I.D.)	GRADE	COATING	DATE	W.O.
1357+90.0 1364+80.0	10.374 .188W.T.	X-52	SOMASTIC	7/67	274968

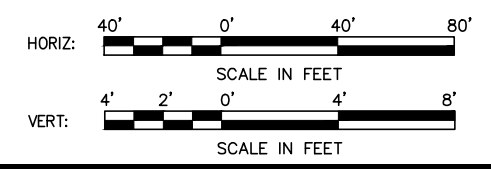
CARDINAL PIPELINE L.P.
3760 Kilroy Airport Way, Suite 300
Long Beach, California 90806

BREA CRUDE 10" CSFM-339		SCALE: AS SHOWN DRAWN: SL	DATE: 06/12/73 SHEET 1 OF 1	Y-5387	REV. 1
PIPELINE ALIGNMENT SIGNAL HILL, CA					

Section 3: Pipeline Maps



*NOTE: WALL THICKNESS LESS THAN .250 WALL - THIS SEGMENT OF PIPE ONLY.



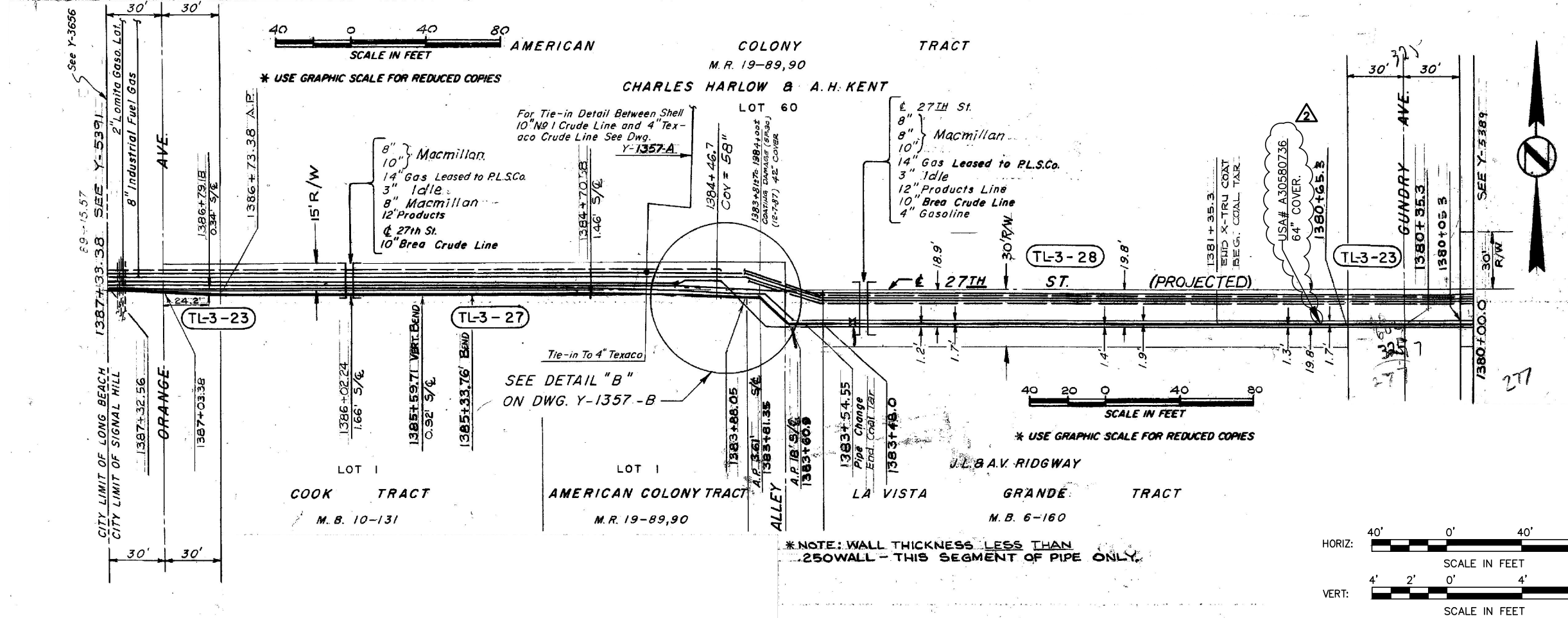
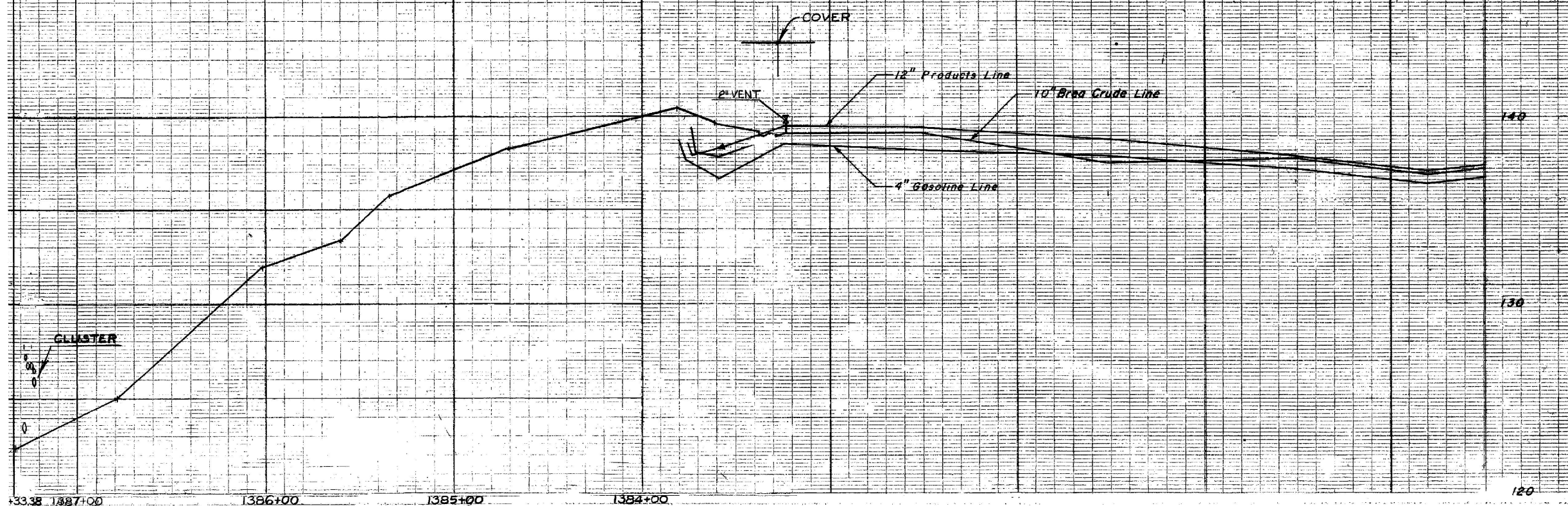
THIS DOCUMENT IS CONFIDENTIAL AND IT SHALL NOT BE REPRODUCED OR REDISTRIBUTED WITHOUT PRIOR PERMISSION. NEITHER THE OPERATOR NOR THE OWNER MAKE ANY WARRANTY AS TO THE CORRECTNESS OR COMPLETENESS OF THE INFORMATION CONTAINED ON THIS DRAWING, AND THE USER ASSUMES ALL RISK OF LOSS TO PERSONS AND PROPERTY AS A RESULT OF RELIANCE THEREON.

REV NO	DATE	DESCRIPTION OF REVISION	BY	CHK	ENGR
3	02/01/17	REVISED PER EXPOSURE REPORT USA# A63150838 11/23/16	JAL		
2	01/11/17	REPAIRS MADE TO PIPELINE PER W.O. LB-2553 06/19/12	JAL		
1	11/23/15	ADDED TITLE BLOCK AND DISCLAIMER TO FORMER SHELL DWG	RR		
0	06/1978	GENERAL REVISION			

1372+40.0	1380+00.0	10.374 .188W.T.	X-52	SOMASTIC	7/67	274968
STATION TO STATION	SIZE (I.D.)	GRADE	COATING	DATE	W.O.	

CARDINAL PIPELINE L.P.
3760 Kilroy Airport Way, Suite 300
Long Beach, California 90806

BREA CRUDE 10" CSFM-339		Y-5389	REV. 3
PIPELINE ALIGNMENT SIGNAL HILL, CA			
SCALE: AS SHOWN	DATE: 06/12/73		
DRAWN: SL	SHEET 1 OF 1		



THIS DOCUMENT IS CONFIDENTIAL AND IT SHALL NOT BE REPRODUCED OR REDISTRIBUTED WITHOUT PRIOR PERMISSION. NEITHER THE OPERATOR NOR THE OWNER MAKE ANY WARRANTY AS TO THE CORRECTNESS OR COMPLETENESS OF THE INFORMATION CONTAINED ON THIS DRAWING, AND THE USER ASSUMES ALL RISK OF LOSS TO PERSONS AND PROPERTY AS A RESULT OF RELIANCE THEREON.

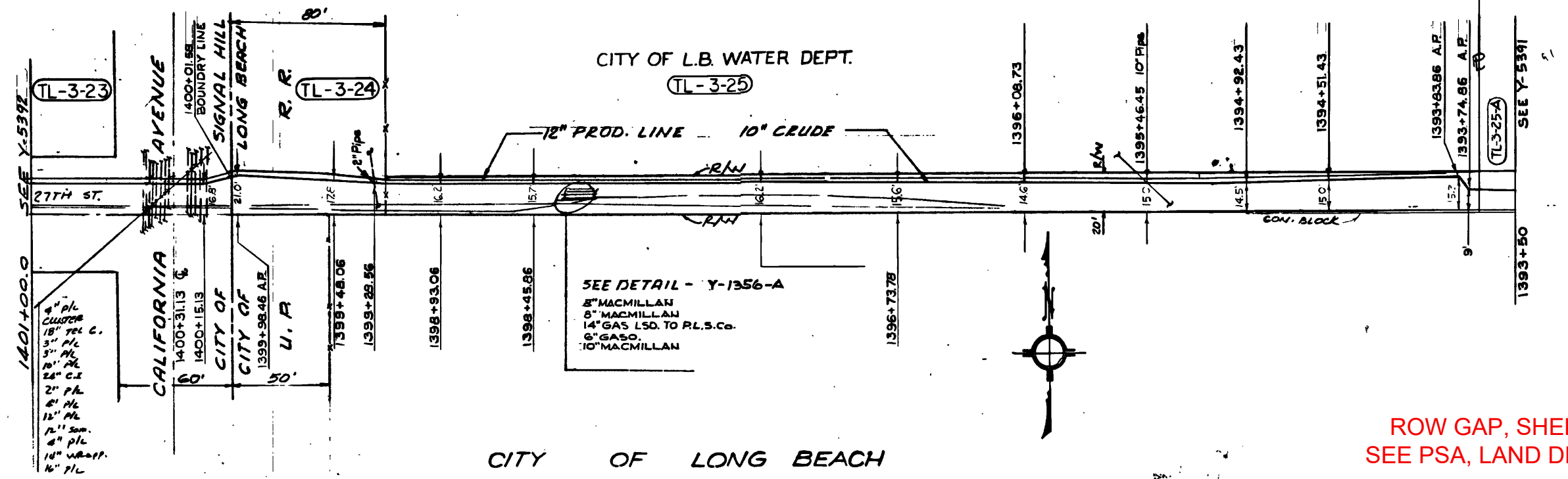
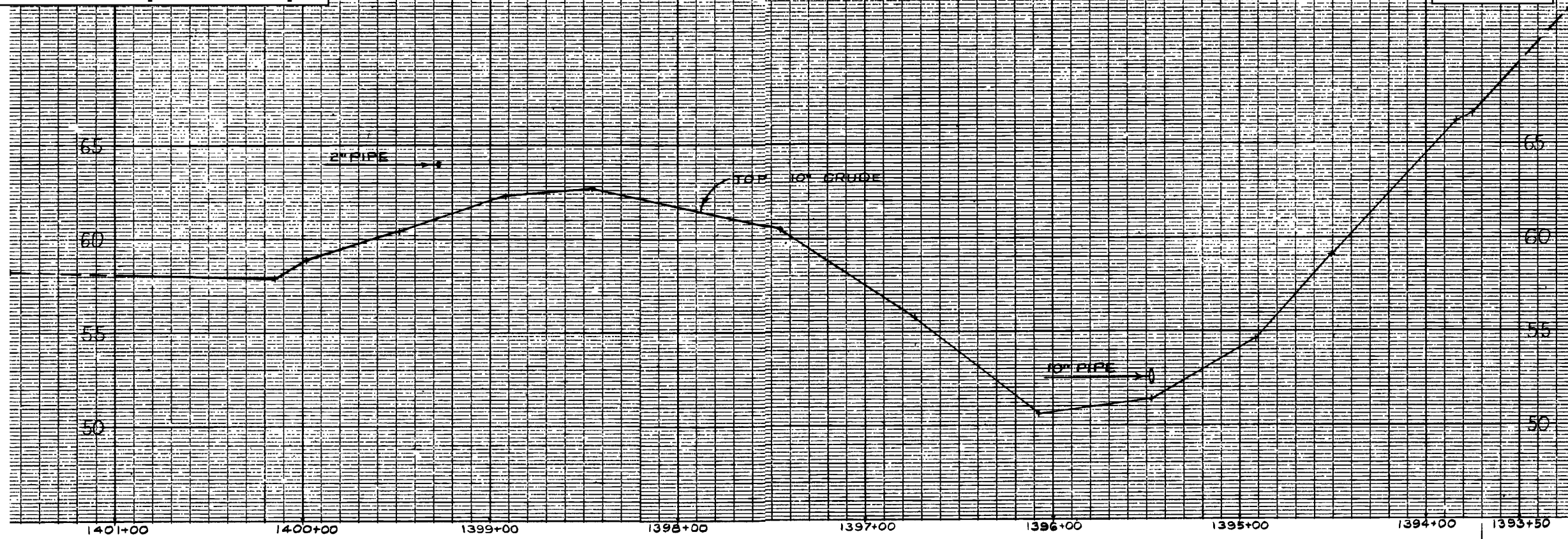
REV NO	DATE	DESCRIPTION OF REVISION	BY	CHK	ENGR
2	12/22/16	REVISED PER EXPOSURE REPORT USA# A30580736 04/05/13	JAL		
1	11/23/15	ADDED TITLE BLOCK AND DISCLAIMER TO FORMER SHELL DWG	RR		
0	08/1990	GENERAL REVISION			

STATION TO STATION	SIZE (I.D.)	GRADE	COATING	DATE	W.O.
1383+54.55 - 1387+33.38	10.250 .250W.T.	X-52	X-TRUE COAT	3/73	377172
1380+00.0 - 1383+54.55	10.374 .188W.T.	X-52	SOMASTIC	7/67	274968

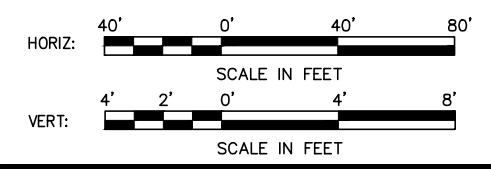
CARDINAL PIPELINE L.P.
3760 Kilroy Airport Way, Suite 300
Long Beach, California 90806

BREA CRUDE 10" CSFM-339		SCALE: AS SHOWN	DATE: 06/12/73	Y-5390	REV. 2
PIPELINE ALIGNMENT SIGNAL HILL, CA					
DRAWN: SL	SHEET 1 OF 1				

Section 3: Pipeline Maps



ROW GAP, SHELL
SEE PSA, LAND DEPT.



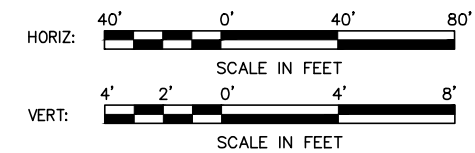
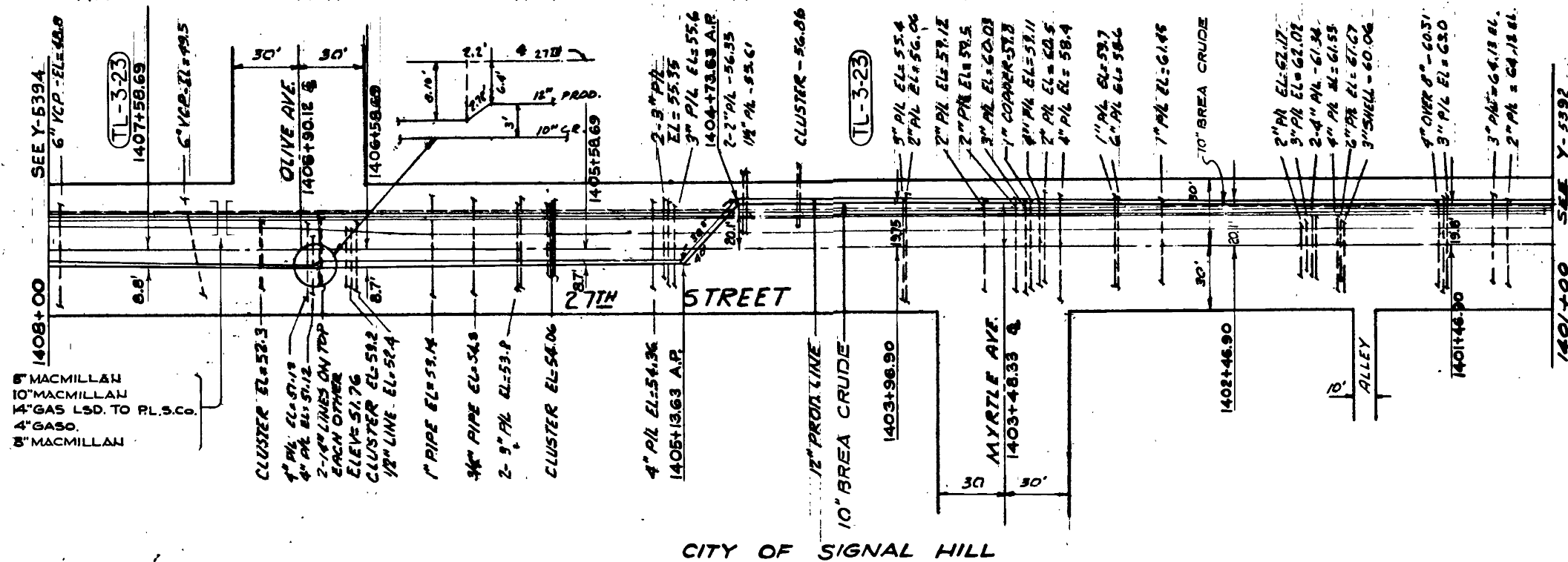
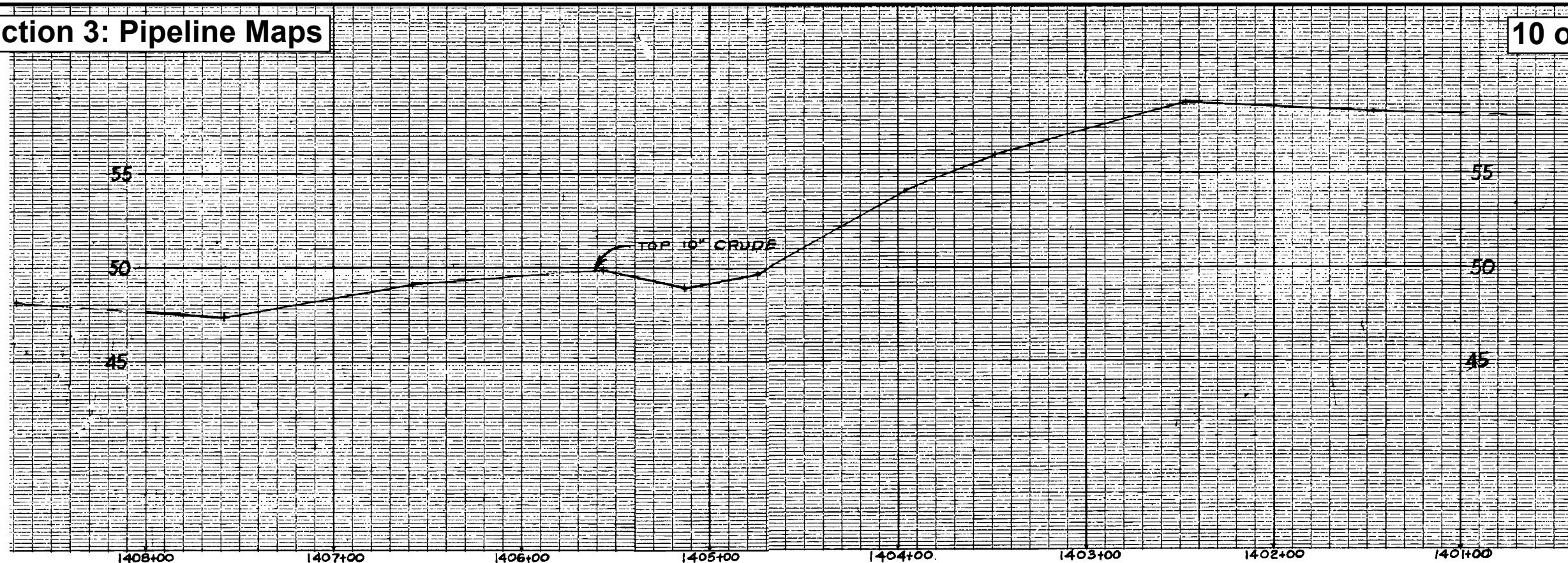
THIS DOCUMENT IS CONFIDENTIAL AND IT SHALL NOT BE REPRODUCED OR REDISTRIBUTED WITHOUT PRIOR PERMISSION. NEITHER THE OPERATOR NOR THE OWNER MAKE ANY WARRANTY AS TO THE CORRECTNESS OR COMPLETENESS OF THE INFORMATION CONTAINED ON THIS DRAWING, AND THE USER ASSUMES ALL RISK OF LOSS TO PERSONS AND PROPERTY AS A RESULT OF RELIANCE THEREON.

REV NO	DATE	DESCRIPTION OF REVISION	BY	CHK	ENGR
1	11/23/15	ADDED TITLE BLOCK AND DISCLAIMER TO FORMER SHELL DWG		RR	
0	06/1978	GENERAL REVISION			

1393+50.0	1401+00.0	10.250	X-52	X-TRUE COAT	3/73	377172
STATION TO STATION		SIZE (I.D.)	GRADE	COATING	DATE	W.O.

CARDINAL PIPELINE L.P.
3760 Kilroy Airport Way, Suite 300
Long Beach, California 90806

EAST CRUDE 10" CSFM-339		Y-5392	REV. 1
PIPELINE ALIGNMENT LONG BEACH, CA			
SCALE: AS SHOWN	DATE: 10/25/73		
DRAWN: TEP	SHEET 1 OF 1		



THIS DOCUMENT IS CONFIDENTIAL AND IT SHALL NOT BE REPRODUCED OR REDISTRIBUTED WITHOUT PRIOR PERMISSION. NEITHER THE OPERATOR NOR THE OWNER MAKE ANY WARRANTY AS TO THE CORRECTNESS OR COMPLETENESS OF THE INFORMATION CONTAINED ON THIS DRAWING, AND THE USER ASSUMES ALL RISK OF LOSS TO PERSONS AND PROPERTY AS A RESULT OF RELIANCE THEREON.

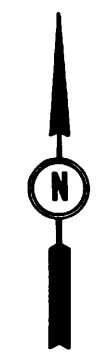
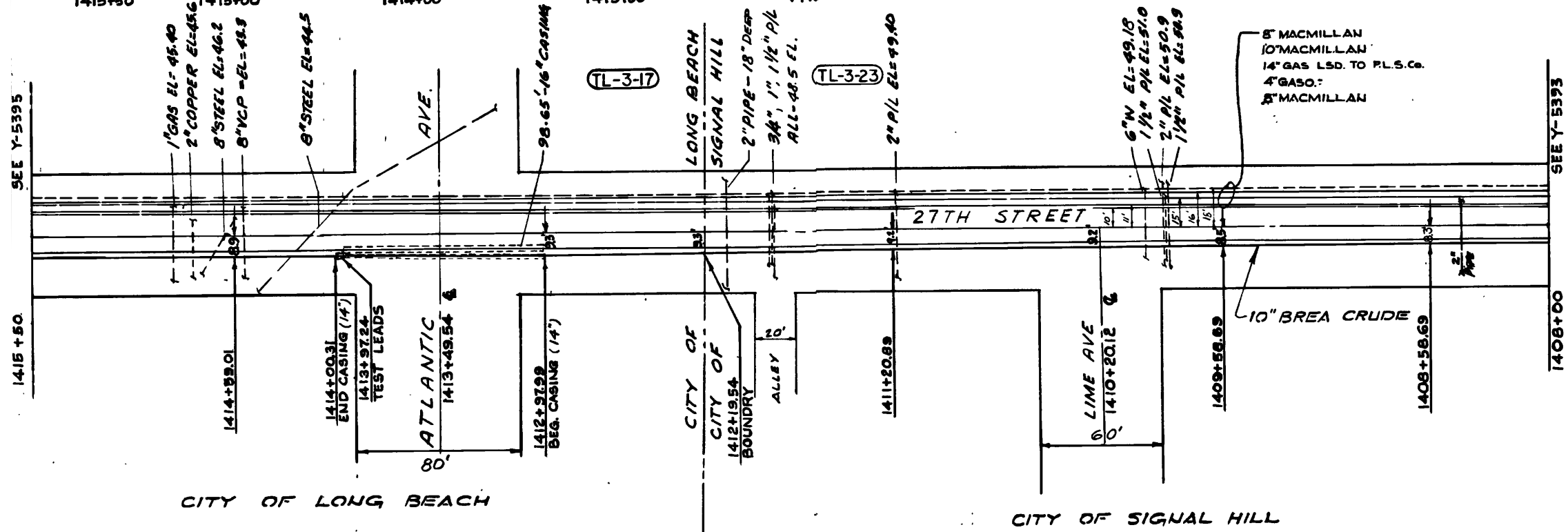
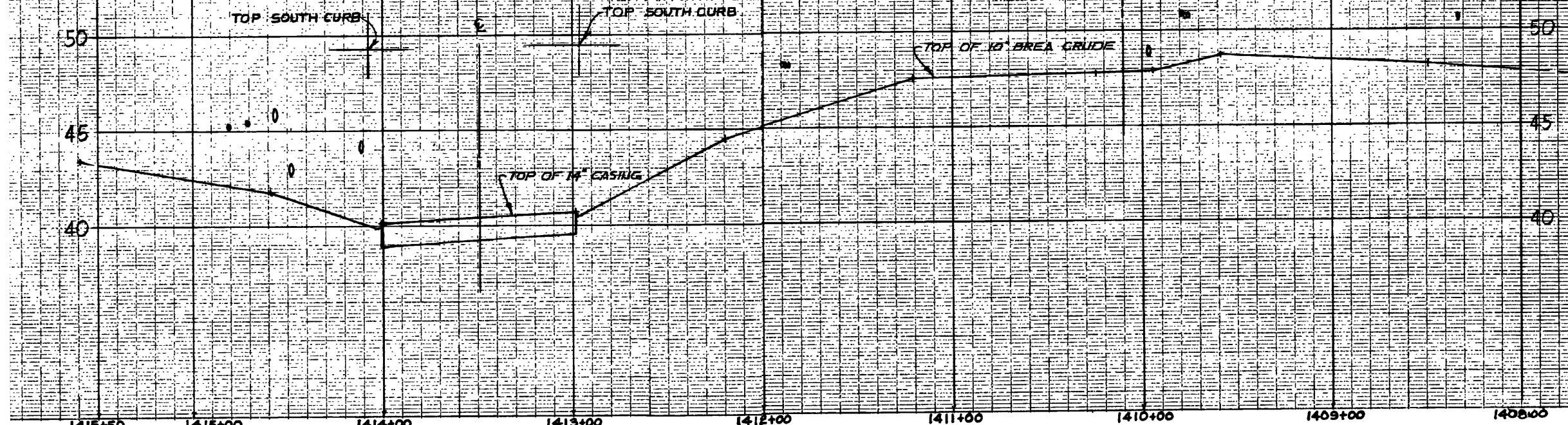
REV NO	DATE	DESCRIPTION OF REVISION	BY	CHK	ENGR
1	11/23/15	ADDED TITLE BLOCK AND DISCLAIMER TO FORMER SHELL DWG		RR	
0	06/1978	GENERAL REVISION			

STATION TO STATION	1401+00.0	1408+00.0
SIZE (I.D.)	10.250	.250W.T.
GRADE	X-52	
COATING	X-TRUE COAT	
DATE	3/73	
W.O.	377172	

CARDINAL PIPELINE L.P.
3760 Kilroy Airport Way, Suite 300
Long Beach, California 90806

BREA CRUDE 10" CSFM-339		SCALE: AS SHOWN	DATE: 10/23/73	Y-5393	REV. 1
PIPELINE ALIGNMENT					
SIGNAL HILL, CA		DRAWN: TM	SHEET 1 OF 1		

Section 3: Pipeline Maps



THIS DOCUMENT IS CONFIDENTIAL AND IT SHALL NOT BE REPRODUCED OR REDISTRIBUTED WITHOUT PRIOR PERMISSION. NEITHER THE OPERATOR NOR THE OWNER MAKE ANY WARRANTY AS TO THE CORRECTNESS OR COMPLETENESS OF THE INFORMATION CONTAINED ON THIS DRAWING, AND THE USER ASSUMES ALL RISK OF LOSS TO PERSONS AND PROPERTY AS A RESULT OF RELIANCE THEREON.

REV NO	DATE	DESCRIPTION OF REVISION	BY	CHK	ENGR
1	11/23/15	ADDED TITLE BLOCK AND DISCLAIMER TO FORMER SHELL DWG		RR	
0	06/1978	GENERAL REVISION			

1408+00.0	1415+50.0	10.250	X-52	X-TRUE COAT	3/73	377172
STATION TO STATION		SIZE (I.D.)	GRADE	COATING	DATE	W.O.

CARDINAL PIPELINE L.P.
3760 Kilroy Airport Way, Suite 300
Long Beach, California 90806

BREA CRUDE 10" CSFM-339		Y-5394	REV. 1
PIPELINE ALIGNMENT LONG BEACH/SIGNAL HILL, CA			
SCALE: AS SHOWN	DATE: 10/22/73		
DRAWN: TM	SHEET 1 OF 1		