



**LOS ANGELES COUNTY
SANITATION DISTRICTS**
Converting Waste Into Resources

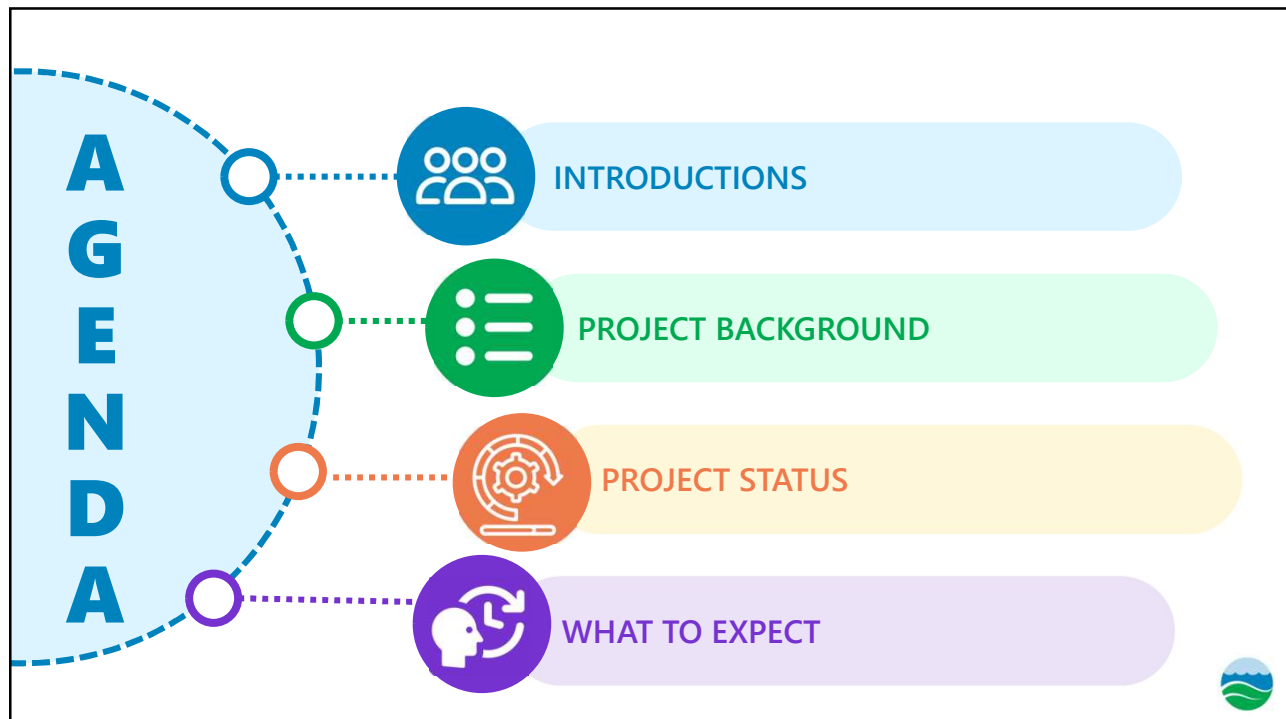
SPRING STREET PUMPING PLANT PROJECT UPDATE

Maria Rosales, PI Supervising Engineer
Fulbert Chan, Design Project Engineer
Edgar Rocha, Assistant Resident Engineer

September 9, 2025



1



2

Sanitation Districts at a Glance

Formed
in 1923

Treat wastewater
for 5.5 million
residents

Produce recycled water,
fertilizer and green
energy

Handle 2 million
tons of county's
solid waste

Produce green energy &
have large food waste
recycling operation

Treat diverted
stormwater flow

1,700
employees

\$1 billion
annual budget



3



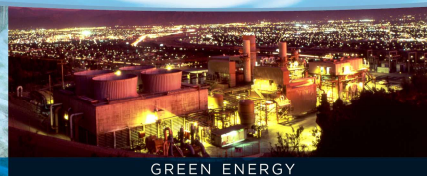
**LOS ANGELES COUNTY
SANITATION DISTRICTS**
Converting Waste Into Resources

OUR MISSION

To protect public health and the environment through innovative and cost-effective wastewater and solid waste management and, in doing so, convert waste into resources such as recycled water, energy, and recycled materials.



WATER RECYCLING



GREEN ENERGY

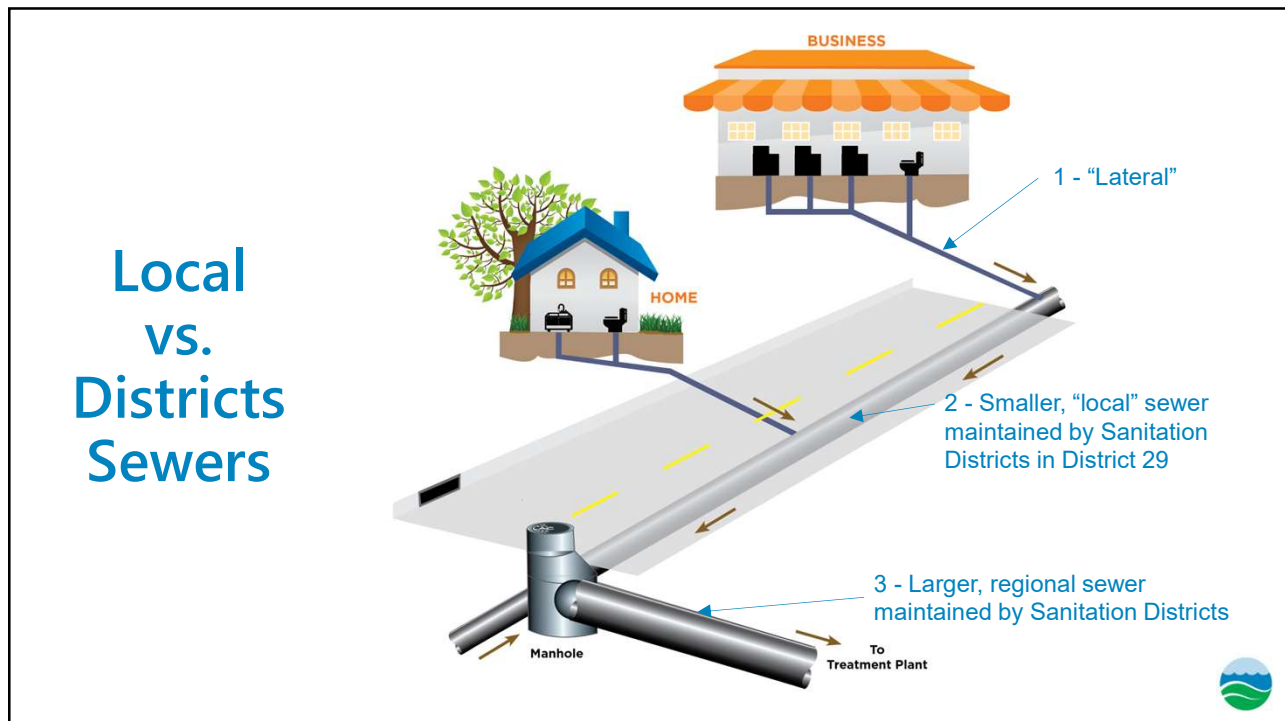


MATERIALS RECYCLING

4



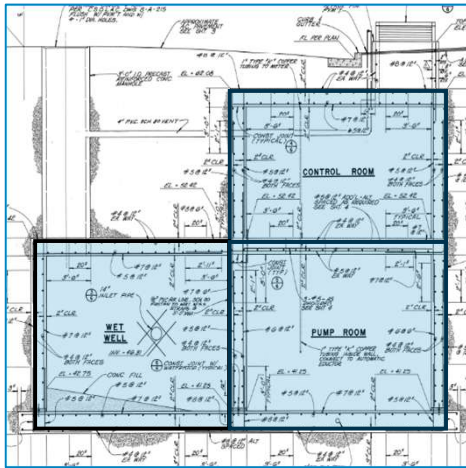
5



6



Project Background Spring Street Pumping Plant – Facility Improvements



1985 – Constructed
2003 – LACSD took ownership

The pumping plant collects wastewater from the local area and pumps it to the A.K. Warren Water Resource Facility for treatment.

- 365 gallons per minute peak flow during dry weather.
- 930 gallons per minute peak flow during wet weather.



7



Project Background Spring Street Pumping Plant – Facility Improvements



Pumping Plant Deficiencies:

- Aging infrastructure.
- Inadequate peak wet weather capacity.
- Electrical systems and the diesel generator are subject to flooding.
- Lack of permanent lifting equipment for pump maintenance.
- Does not meet current safety standards.

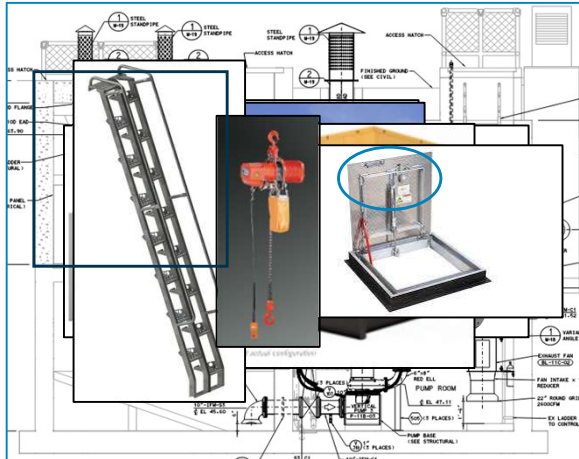


8



Project Background

Spring Street Pumping Plant – Facility Improvements



Major Improvements:

- Rehabilitated sewage wet well.
- Isolated electrical control room.
- Upgraded mechanical and electrical and instrumentation systems.
- New emergency generator at City Yard (capable of powering all 3 pumps).
- New electric chain hoist.
- Added safety features including ladders with proper railing, and spring-assisted entry hatches.
- Upgraded ventilation system.
- Added site security.



9



PROJECT STATUS

Construction on Spring Street

Working Hours

- Normal working hours: Monday – Friday 7 AM – 3:30 PM
- Extended working hours: Monday – Friday 4 AM – 8 PM for bypass
- Excludes holidays
- 24-hr Bypass Monitoring

Personnel

- District Inspector (*on-site*)
- Contractor staff 24/7 for bypass monitoring
- District staff 24/7 in case of emergencies

Vehicles & Sidewalk

- “No Parking” signs posted along the street
- “Sidewalk Closed” sign posted on sidewalk, and pedestrian detour provided
- Driveway access provided during working hours as needed

10



PROJECT STATUS

Traffic Control on Spring Street



11



PROJECT STATUS

Bypass System

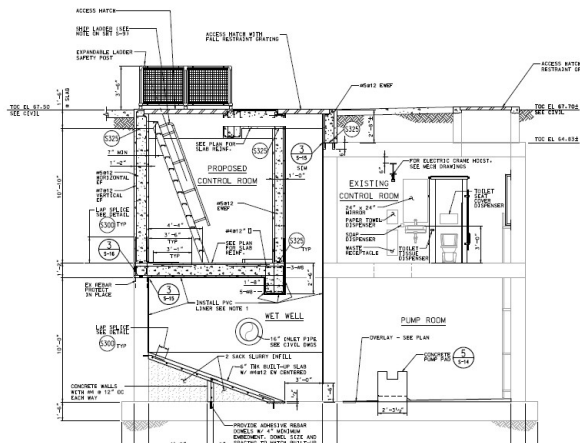


12



PROJECT STATUS

Proposed Control Room



Proposed Control Room



13



PROJECT STATUS

Schedule



July 2024

May 2025

Aug to Oct
2025

May 2026

Project Duration
450 Working DaysConstruction
BeginsBypass
OperationTentative
Construction
Completion Date

14

WHAT TO EXPECT

- 1 All permits were issued, and businesses were issued notices at 14-days, 7-days, and 24-hours in advance of work
- 2 Businesses can continue discharging water down their drains during construction
- 3 Parking lane closure on East Spring Street
- 4 Construction area is 50'x40' in City Yard and 68'x100' in the Dodge Dealership



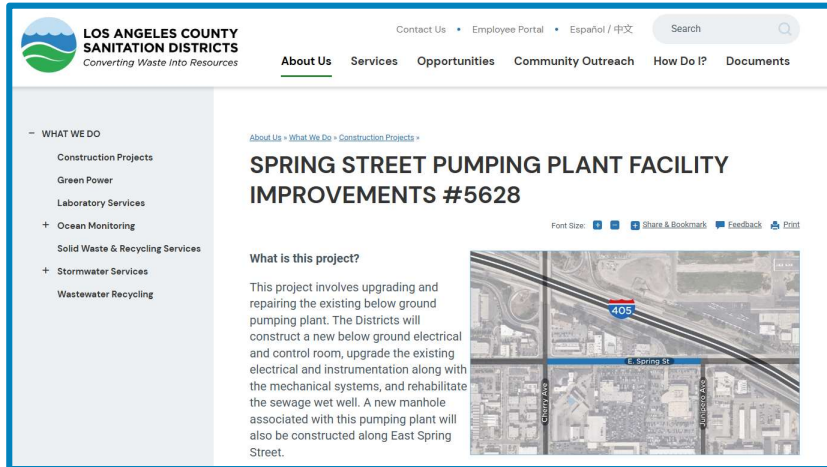
15

WHAT TO EXPECT



16

CONSTRUCTION WEBPAGE



Scan the code to access the construction project site



19

QUESTIONS? CONTACT US.

Public Information Office
info@lacsds.org
 (562) 908-4288 x 2300



**LOS ANGELES COUNTY
 SANITATION DISTRICTS**
 Converting Waste Into Resources



20